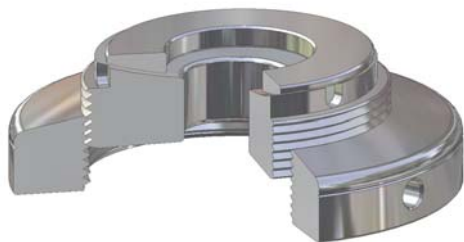
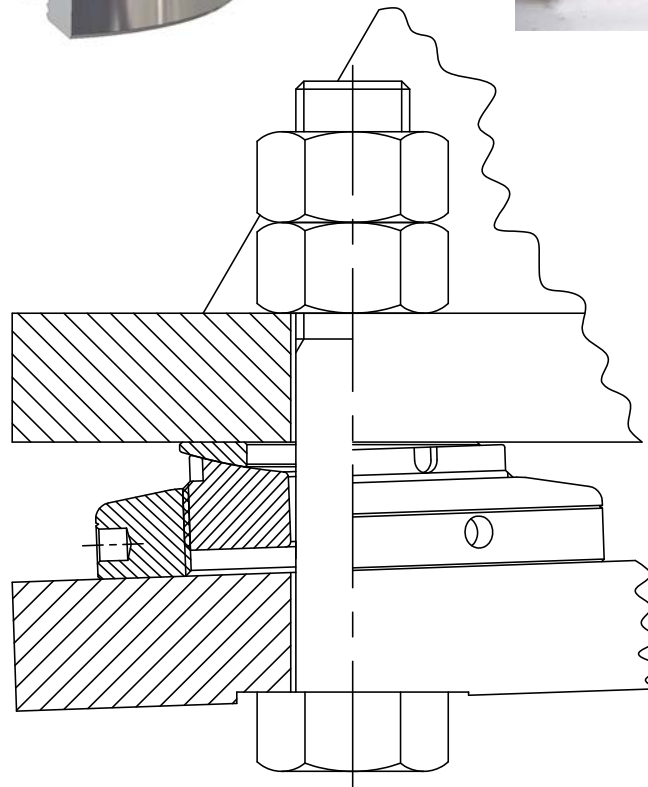


Vibracon® manual



Contents

| | Version |
|--|---------|
| Chapter 1 Vibracon® Brochure | 9 |
| Chapter 2 How to order Vibracon® chocks | 2.1 |
| Chapter 3 Vibracon® References and Approvals | 2.6 |
| Chapter 4 Vibracon® Installation Procedure | 2 |
| Chapter 5 Vibracon® Frequently Asked Questions | 2 |
| Chapter 6 Vibracon® Application Design Instructions | 2.1 |
| Chapter 7 Other products and services of the Machine Support Group | 2 |

Introduction

Vibracon® chocks are permanent, strong and re-usable machinery mounting chocks for all types of rotating or critically aligned machinery. Vibracon® chocks are mechanically stiff chocks that make accurate mounting simple and quick. The Vibracon® advantages are elimination of the trial and error alignment process characteristic for the “mill and shim” method and adjustability during the life cycle of the machinery.

The Vibracon® chock has many configurations and material options to satisfy technical concerns, in end user environments and production line costs. All Vibracon® chocks include the spherical top plate and mating middle section. This self leveling configuration accommodates the angular differences that are inherent with mounting surfaces. The height adjustment feature has the greatest range in the industry, which makes the Vibracon® chock easy to install.

Vibracon® chocks are the most economical means to establish a perfect mounting plane. The Vibracon® advantage is the capability to perfectly create the mounting plane within minutes and repeatedly for Production or Service Managers and Accountants.

In this manual we will inform you about all facts of the Vibracon®. If you have further questions or if you need additional information, please remember The Machine Support Group is a 24/7 organization. Please don't hesitate to contact one of our offices as mentioned below.

Machine Support B.V.

Kaartenmakerstraat 7
NL-2984 CB Ridderkerk
The Netherlands
Phone (+) 31 (0)180 483828
Fax (+) 31 (0)180 483829
e-mail info@machinesupport.com

Machine Support USA Inc.

3443 N Sam Houston Pkwy W
Houston, TX 77086
United States
Phone (+) 1 877 621 1777
(+) 1 281 925 2849
Fax (+) 1 281 447 0668
e-mail vibracon-usa@machinesupport.com

Machine Support USA Inc.

218 Venture Blvd.
Houma, LA 70360
United States
Phone (+) 1 985 851 5100
Fax (+) 1 985 851 0061
e-mail service@machinesupport.com

Machine Support U.A.E.

P.O. Box 8807
Dubai
United Arab Emirates
Phone (+) 971 (0) 433 92215
Fax (+) 971 (0) 433 91952
e-mail service@machinesupport.com